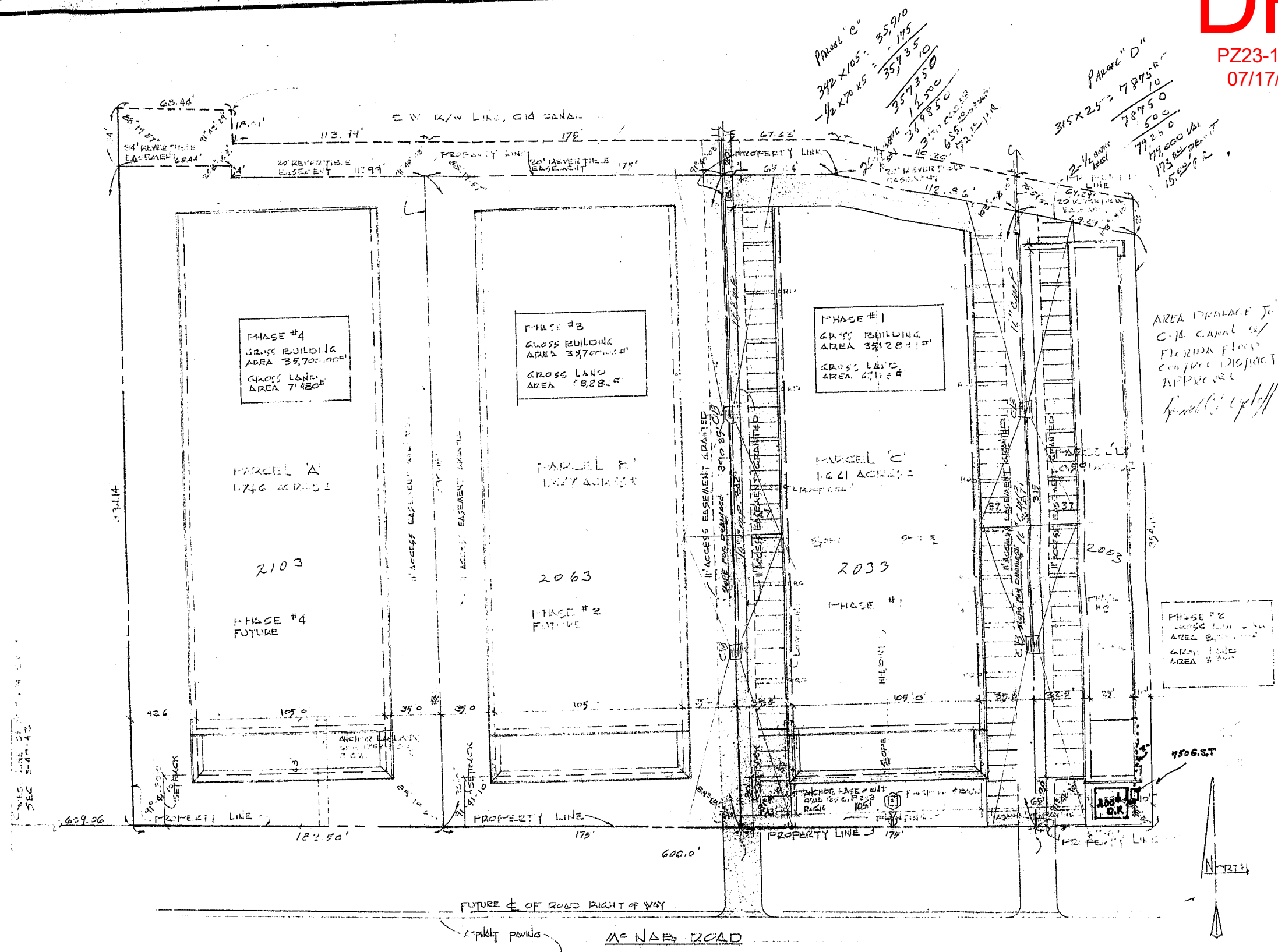


DRC

PZ23-12000023
07/17/2024



ROOF PLAN & SITE DEVELOPMENT
DO NOT SCALE

CITY FILE COPY

PARKING AREA TO DRAIN INTO C-14 CANAL
AS PER FLOOD CONTROL DISTRICT APPROVAL
PHASE #1 PARKING 74 CARS
PHASE #2 PARKING 37 CARS

RONALD L. UPHOFF
ARCHITECT
FORT LAUDERDALE

A WAREHOUSE COMPLEX
FOR JOHN F. BLOOM
FORT LAUDERDALE, FLORIDA

DATE	DRAWN	REVISIONS
5-21-72	RLJ	11-7-73
		200' W 40'
		100' W 40'
		100' W 40'

DRC

PZ23-12000023
11/01/2023